

LBB 3585

System Installation

- Single-point control of system installation
- Facilities for assigning functions to audio channels
- Automatic seat numbering
- In-conference warning message when installation configuration changes
- On-screen help facility

The System Installation software is a powerful and effective tool for installers and system operators when installing and setting up the DCN system. System installation, set-up and functions are brought entirely under PC control through its easy-to-use, Windows-based software.

The DCN System Installation software provides - in an easy yet methodical way - the means to assign seat numbers to microphone units and to specify the number of audio channels dedicated to interpretation, floor and intercom facilities.

Assigning seat numbers

The initial task in any installation is to assign seat numbers to delegate contribution units. The System Installation software makes the task easy with a choice of two assignment methods:

- (1) From the hall, by physically pressing delegate microphone buttons in sequence.
This is registered by the PC which in turn automatically allocates the unit a number.
- (2) From the PC, where the operator selects a random microphone and allocates a number.
The next assigned number will follow on sequentially. The software instantly recognises when a new unit is installed by offering a seat number for the newly installed unit.

A dialogue box displaying the system configuration is available at any time, with the total number of installed delegate and chairman units, interpreter desks etc.

Audio channel assignment

The DCN system offers in total 16 audio output channels, with a default configuration of 15 distribution and 1 communication channel. Twelve distribution channels can be assigned to combinations of interpretations, floor language and intercom, with two channels reserved for line output and one for delegate loudspeakers as default. If required, these three extra channels can also be used for interpretations.

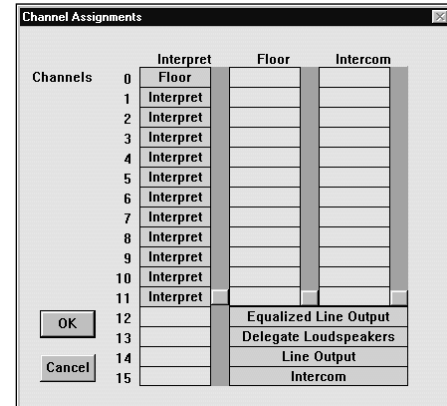
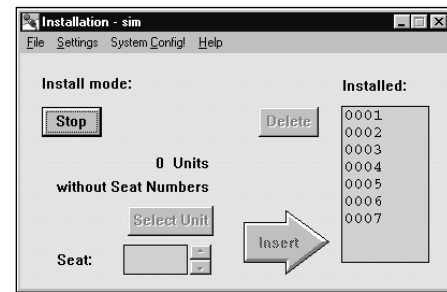
All channel assignments are interdependent. The number of channels assigned to floor and intercom is dependent on the number required for simultaneous interpretation.

In large international conferences using 15 interpretation channels plus one floor channel, a channel is automatically assigned to interpreter intercom use. In such a case the system performs totally as an interpretation system.

Note: All distribution channels are available via the Audio Media Interface Unit LBB 3508. The line output on the central control unit always provides a floor signal which is the sum of all active microphones.

The task of assigning audio channels is made easy with the aid of on-screen channel selection, using a display with three scroll bars that gives an instant overview of all channel allocations and the effect of altering any of these allocations.

System Installation is primarily a preparation program. Once all microphones and delegate units have been assigned seat numbers and the audio channels configured and tested, there will be no need to use System Installation for day-to-day monitoring and



controlling of a conference. However, if the physical layout changes in the conference hall (delegate units are added, for example) then the data in System Installation must be updated, and a message immediately appears in the installation window.

The conference-related information generated is stored in an installation file. The user can open, create, save, delete and save these files under a new name.

***Note:** the maximum number of interpretation channels when used in a multi-CCU configuration is 11.*